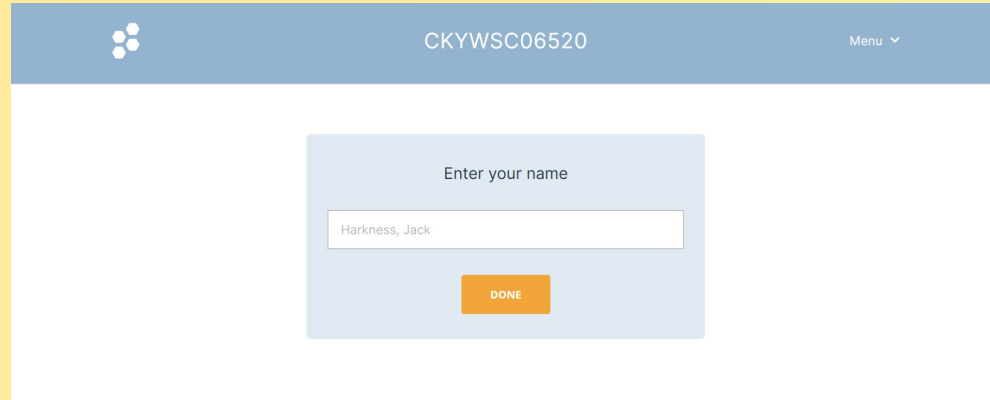




SCHOLAR'S BOWL

Instructions:

1. Please head to gosocrative.com and enter the room number: CKYWSC06520
2. Input your team/individual name below (use the Discord username(s) that you put in the registration form):
*Note: for non-mock round participants, please add an asterisk * next to your name.*



The screenshot shows a web interface for a Socrative poll. At the top, there is a blue header bar with a logo on the left, the room number 'CKYWSC06520' in the center, and a 'Menu' dropdown on the right. Below the header, the main content area is white. In the center, there is a light blue rectangular box. Inside this box, the text 'Enter your name' is displayed above a white text input field. The input field contains the text 'Harkness, Jack'. Below the input field is an orange button with the text 'DONE' in white capital letters.

3. Do **not** answer any questions yet. Wait for further instructions!

[TEST QUESTION]

Press: **A**



ROUND 1



QUESTION 1

100 POINTS



<https://www.yout-ube.com/watch?v=P20XVEH7-SY>



If Zeno of Elea were watching this commercial, what would be his MOST likely reaction?

- A. “The cameraman must be a demigod in disguise.”
- B. “The motion of the cameraman is but an illusion.”**
- C. “The race can only be fair without the cameraman.”
- D. “The athletes should run even faster to catch him.”
- E. “This proves that the universe is fundamentally relative.”

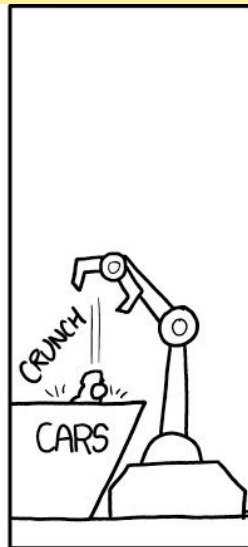
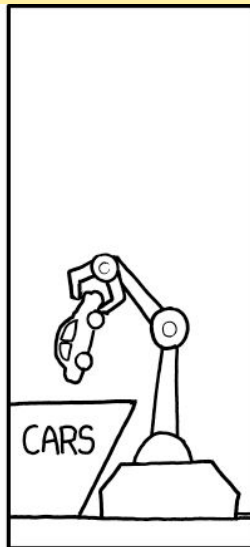
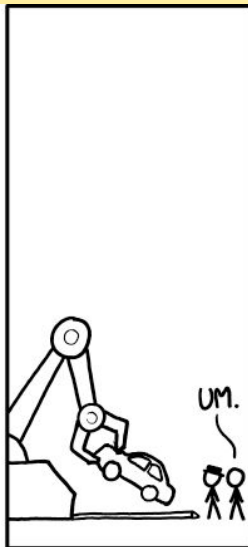
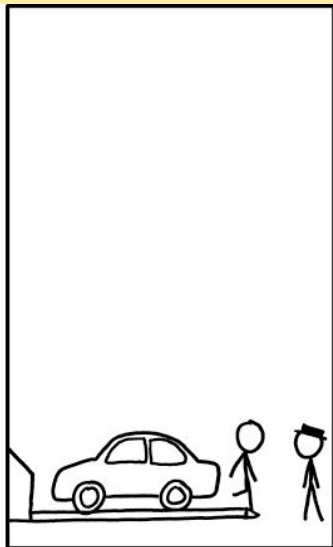


QUESTION 2

120 POINTS

JUST PULL ONTO THE RECEIVING PLATFORM.

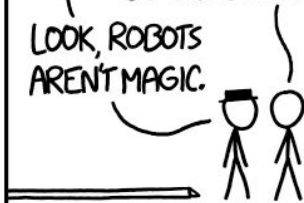
COOL—I'VE ALWAYS WANTED TO TRY ONE OF THESE FUTURISTIC ROBOTIC GARAGES.



WE'LL DUMP OUT THE BIN WHEN YOU GET BACK AND YOU CAN PICK OUT YOUR CAR FROM THE PILE.

CAN YOU AT LEAST MAKE SURE IT'S NOT ON THE BOTTOM?

LOOK, ROBOTS AREN'T MAGIC.





If Frank Lloyd Wright had to design a garage for a house, it would MOST likely look like



A.



If Frank Lloyd Wright had to design a garage for a house, it would MOST likely look like

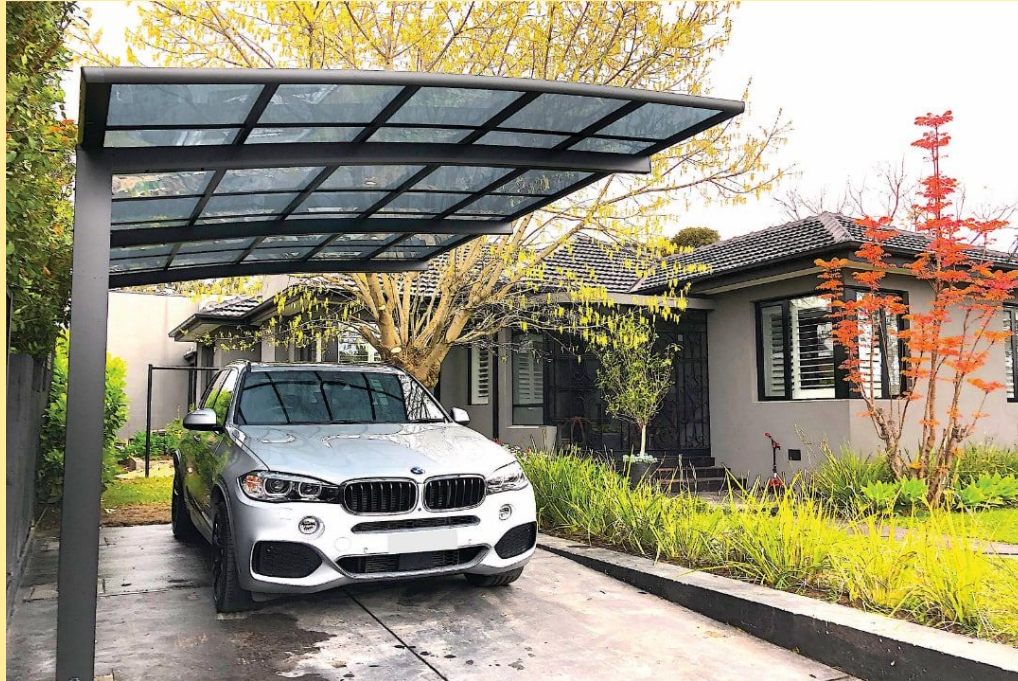


B.



If Frank Lloyd Wright had to design a garage for a house, it would MOST likely look like

C.





If Frank Lloyd Wright had to design a garage for a house, it would MOST likely look like



D.



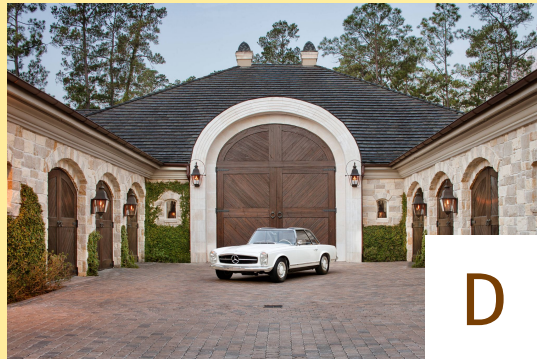
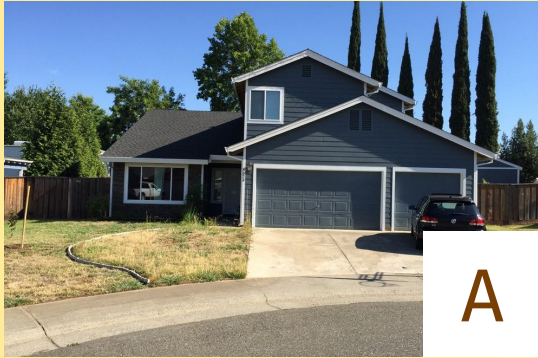
If Frank Lloyd Wright had to design a garage for a house, it would MOST likely look like



E.



If Frank Lloyd Wright had to design a garage for a house, it would MOST likely look like





QUESTION 3

130 POINTS

D-Day





If Q-Day occurs at some point in the future, the MOST likely effect we will experience is

- A. having trouble recalling past events
- B. watching stock prices plummet overnight
- C. losing access to cloud storage
- D. having our social media accounts hacked**
- E. rampant inflation compared to wages



QUESTION 4

200 POINTS





If Count Dooku were the management of Berlin Brandenburg Airport's construction, Yoda's advice would MOST appropriately be

- A. "Better runways, you should have built."
- B. "Stronger beams, you should have used."
- C. "More contractors, you should have hired."
- D. "A better location, you should have chosen."
- E. **"Better wiring work, you should have done."**



QUESTION 5

240 POINTS



S&P 500
-1.19% -81.56
6,787.94

BREAKING NEWS

TRUMP REPLACES KRISTI NOEM AS DHS SECRETARY

NEWS CENTRAL

THE
DAILY
SHOW



Which of the following characters would MOST likely have heard similar orders?

- A. Vladimir and Estragon
- B. Count Alexander Ilyich Rostov**
- C. Andrew Wyeth
- D. Oswald-Joseph Garrow-Fisher
- E. Korczak Ziolkowski



QUESTION 6

300 POINTS



https://www.youtube-nocookie.com/embed/SHnTocdD7sk?list=RD_SHnTocdD7sk&autoplay=1&iv_load_policy=3&loop=1&start=557



The teenager at the counter has experienced an effect MOST similar to

- A. Hawthorne effect
- B. Zeigarnik effect
- C. doorway effect**
- D. Illich's law
- E. differentiation



QUESTION 7

360 POINTS

TECH TRENDS MACBOOK_WHEEL_

https://www.youtube-nocookie.com/embed/9BnLbv6QYcA?playlist=9BnLbv6QYcA&autoplay=1&iv_load_policy=3&loop=1&start=18

TECH TRENDS

Jeff Tate
TECH TRENDS REPORTER



QNN
QATAR NEWS NETWORK

FOR LIVE WEATHER COVERAGE, STOCK QUOTES, AND UP-TO-THE-MIN



To ensure a more successful product launch, Apple should have engaged in more

- A. lean manufacturing
- B. rapid prototyping
- C. storyboarding
- D. quality control
- E. **user testing**

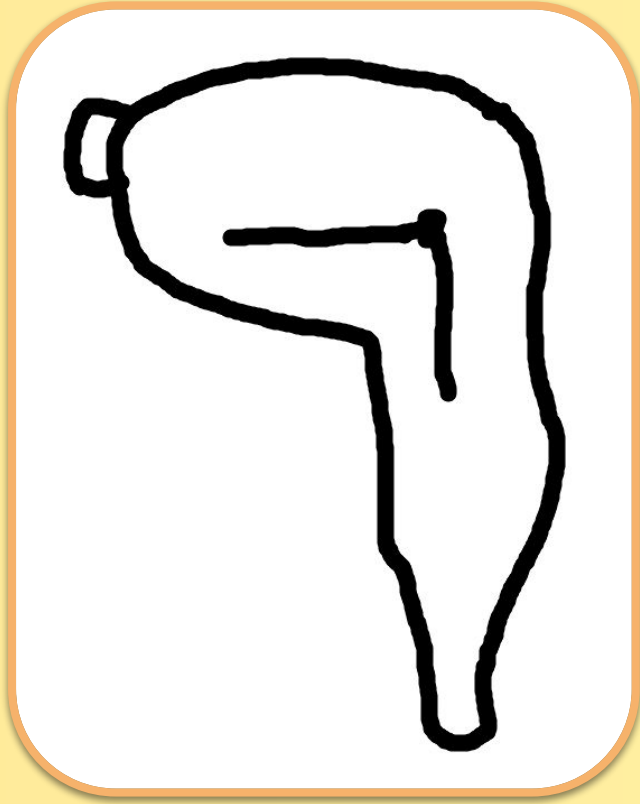


ROUND 2

feat. skribbl.io 



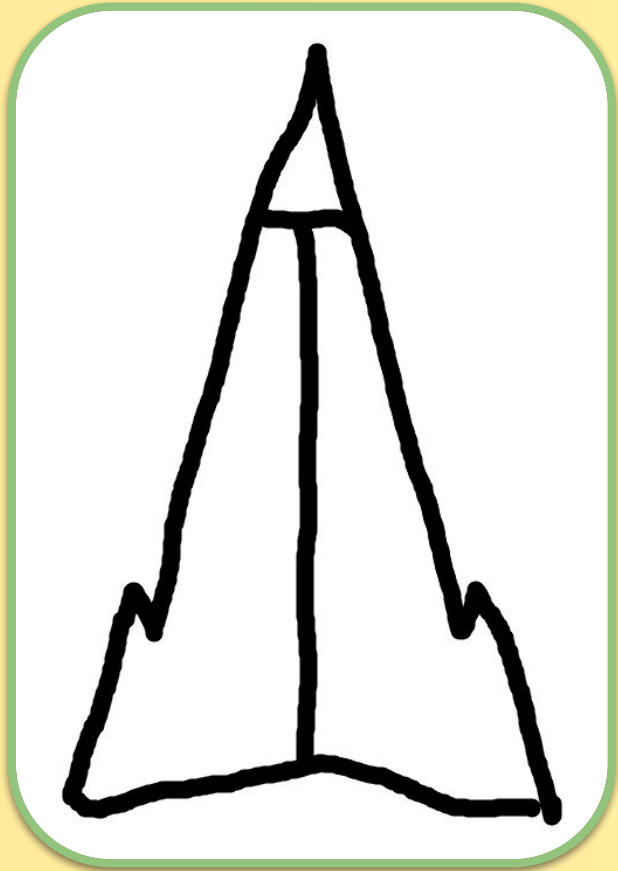
- A. Parc des Celestins
- B. graphene
- C. **Gini coefficient**
- D. Mechanical Turk
- E. space mirrors



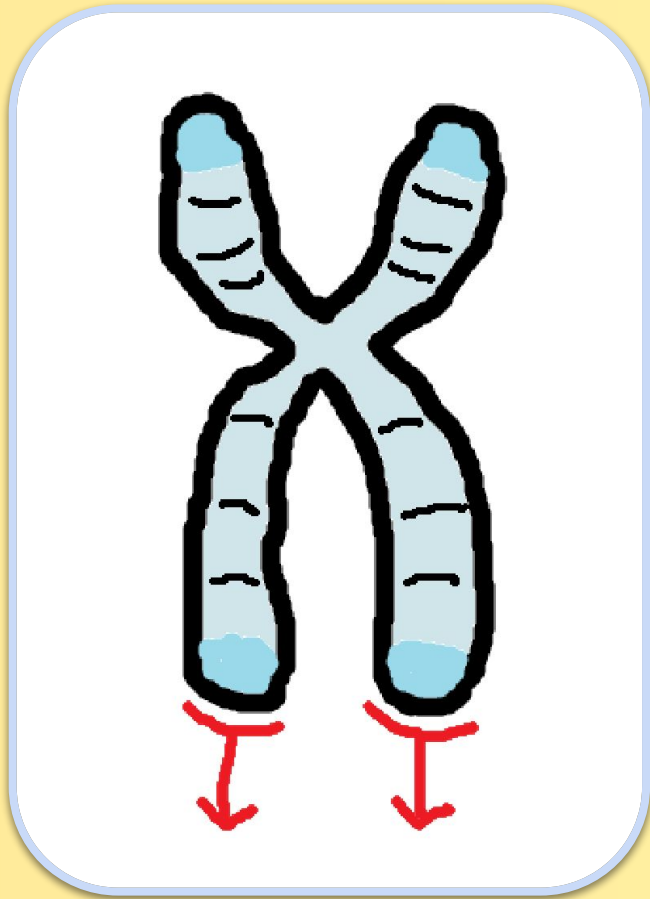
- A. *The Persistence of Memory*
- B. *Despair*
- C. *The Great Day of His Wrath*
- D. *Migration*
- E. *Rain, Steam and Speed*



- A. Harold Camping
- B. Sarah Boone
- C. Alfred Speer
- D. Umberto Eco**
- E. Nikola Tesla



- A. La Sagrada Familia
- B. space elevator
- C. astrolabe
- D. Ryugyong Hotel**
- E. Mount Everest



- A. Harmonogram
- B. cure for cancer
- C. DirectX Box
- D. caloric restriction
- E. **telomere extension**



ROUND 3



Barcelona's La Sagrada Familia is slated to be functionally complete by the end of this year.

A. True

B. False



The Large Hadron Collider is capable of generating dangerous black holes.

A. True

B. False



The track “Family Home Evening” was cut from *The Book of Mormon* due to controversial lyrics.

- A. True
- B. False**



The first lodging establishments were built in the 15th century.

A. True

B. False



Vibe coding makes debugging projects harder.

A. True

B. False



ROUND 4

This letter begins the name of a company that formerly held a patent on loading screen games.

The primary process that optimises brain circuitry as a person grows up begins with this letter.

For **130 points**, what is the first letter of a much-hyped car propulsion technology in the mid-20th century?

A

B

C

D

E

A

B

C

D

E

F

G

H

I

J

K

L

M

N

O

P

Q

R

S

T

U

V

W

X

Y

Z

The liquid component of blood, which is often transferred to severe blood loss patients, begins with this letter.

A principle that claims 80% of outputs come from 20% of inputs begins with this letter.

For **140 points**, what is the first letter of a poem comparing immigration to passing through a door?

A	B	C	D	E
A	B	C	D	E
F	G	H	I	J
K	L	M	N	O
P	Q	R	S	T
U	V	W	X	Y
Z				

This letter begins a term that describes non-recoverable and already incurred expenses.

The first name of a concept artist who illustrated a post-apocalyptic United States begins with this letter.

For **150 points**, what is the first letter of a navigational device that measures the angle between an astronomical object and the horizon?

A

B

C

D

E

A

B

C

D

E

F

G

H

I

J

K

L

M

N

O

P

Q

R

S

T

U

V

W

X

Y

Z

An insect that navigates its surroundings using mental maps and landmarks begins with this letter.

This letter begins the name of the founder of a UFO religion whose adherents wore white clothes and cowboy hats.

For **160 points**, what is the first letter of a modern financial hub which served as a gateway between East and West?

A

B

C

D

E

A

F

K

P

U

Z

B

G

L

Q

V

C

H

M

R

W

D

I

N

S

X

E

J

O

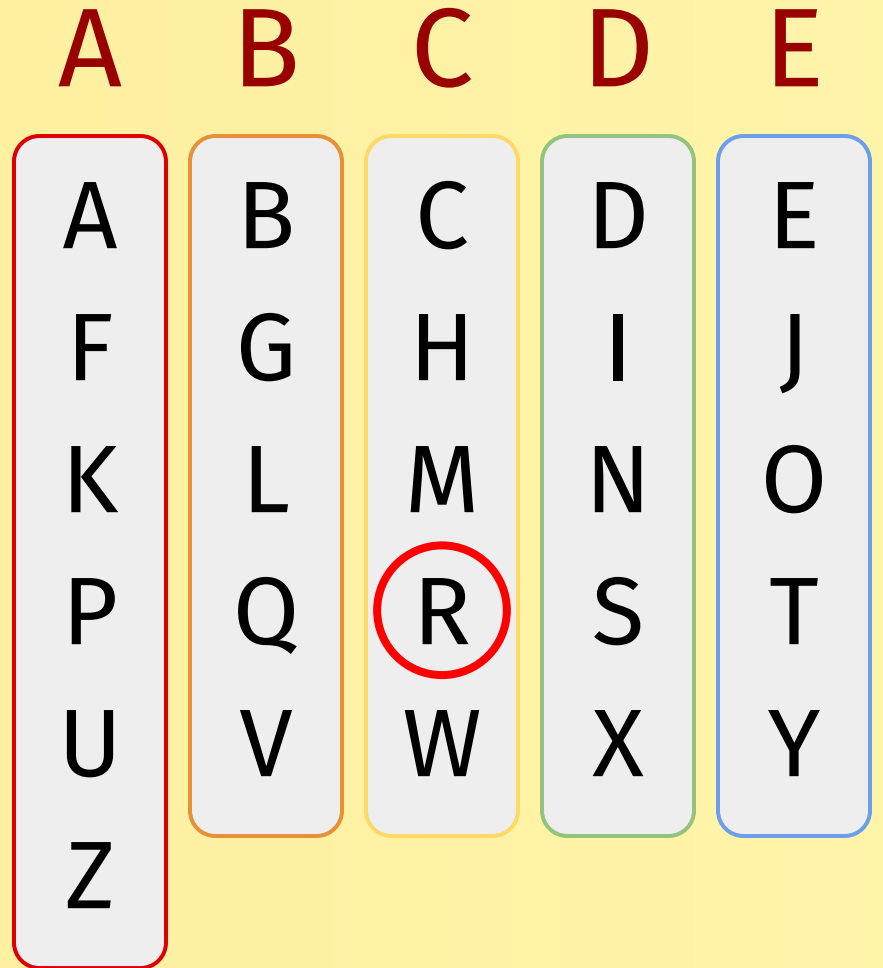
T

Y

An artwork from this year's outline which uses mist to convey speed begins with this letter.

The name of a house which "blurs the boundaries between interior space and nature" starts with this letter.

For **170 points**, what is the first letter of a concept that helps highway planners decide how high to set tolls?





ROUND 5



QUESTION 1

222 POINTS

TRUMP
8022

TEXT TRUMP
TO 8802

X ON
SECURITY

X
PS

SO

NO TAX
ON TIPS

★★★★★

TEXT NC TO 88022

TRUMP

<https://www.yout-ube.com/watch?v=9fFHTngzZHw>



If there actually existed a Tic-Tac index, it would MOST likely measure

- A. **purchasing power parity**
- B. income inequality
- C. economic growth
- D. labour productivity
- E. balance of trade



QUESTION 2

244 POINTS



https://www.yout-ube.com/watch?v=sDU_x5BOFas



Which of the following traits is LEAST likely to be a sign of AI writing?

- A. negative parallelisms
- B. inconsistent grammar**
- C. inconsistent quotation marks
- D. frequent em dashes
- E. capitalisation of headings



QUESTION 3

266 POINTS

WHAT'S THIS?

DOUGLAS HOFSTADTER'S
SIX-WORD AUTOBIOGRAPHY.
AFTER ALL THOSE 700-PAGE
TOMES, I GUESS HE WANTED
TO TRY FOR BREVITY.

HUH. LET'S SEE...



I'M SO META, EVEN THIS ACRONYM



...WHOA.

I THINK HE
NAILED IT.





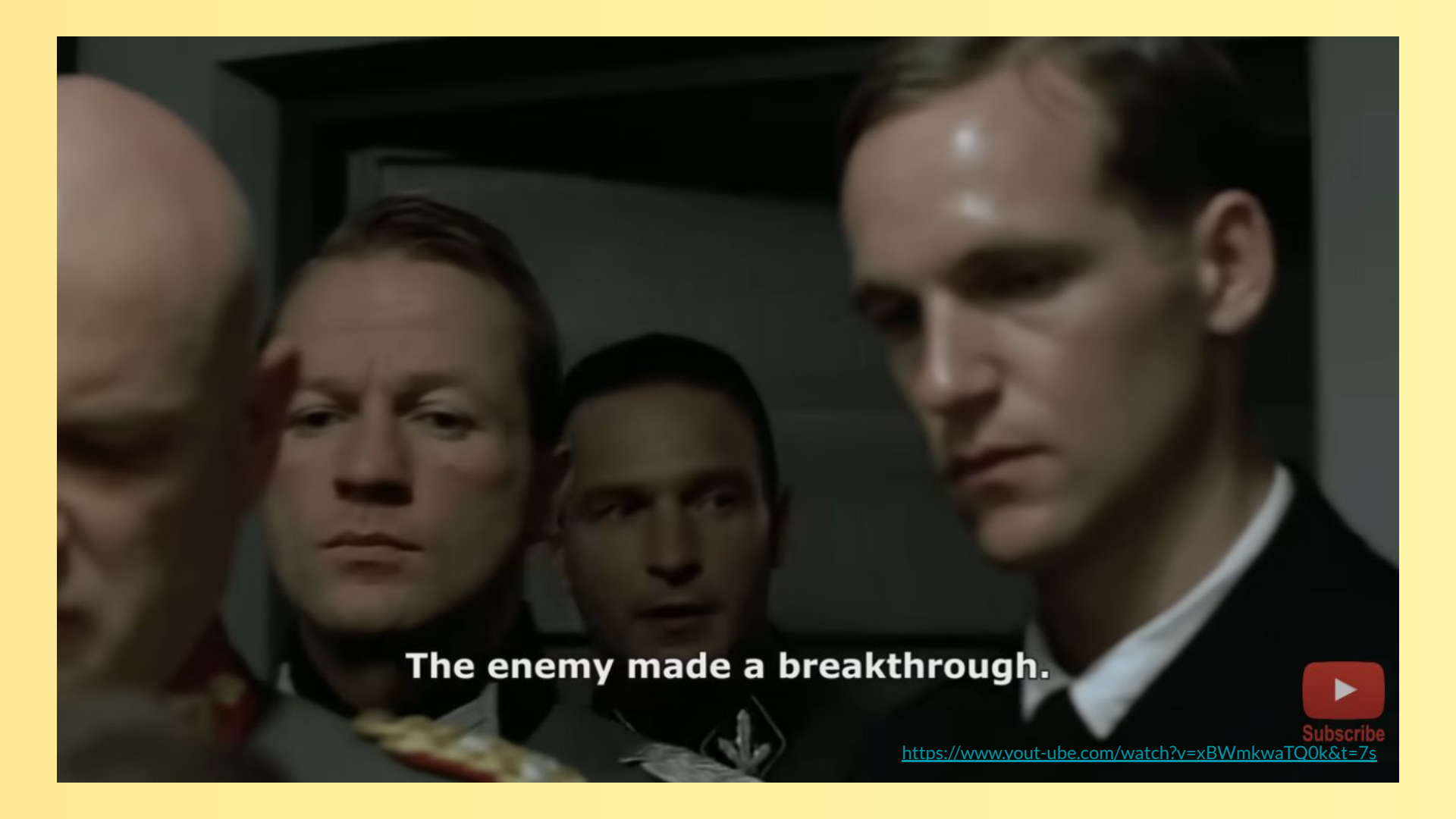
The concept of this comic is MOST similar to that of which work from this year's outline?

- A. *The Treachery of Images*
- B. "Just Drive"
- C. "This One's Mine"
- D. *Six in Four*
- E. "The Man Who Could Walk Through Walls"



QUESTION 4

270 POINTS



The enemy made a breakthrough.



Subscribe

<https://www.youtube.com/watch?v=xBWmkwaTQ0k&t=7s>



A Steiner tree diagram would be MOST appropriately used in the design of

- A. office floor plans
- B. highway routes
- C. multipurpose infrastructure
- D. telecommunications networks**
- E. factory assembly lines



QUESTION 5

333 POINTS



SCORE 96

I'm glad you know
which way to go,

U rappin'

COOL
GOOD !
BAD
AWFUL



“Moving the tassel” from right to left is a ceremony for

- A. a high school student's graduation
- B. the acquisition of a driver's license
- C. a retiree's last day at work
- D. the birth of a child
- E. the bar mitzvah for a Jewish boy



QUESTION 6

366 POINTS



<https://www.yout-ube.com/watch?v=r1ZObEKiZ8o&t=18s>



If this instrumental followed the production stages of “Golden”, the next step would be to

- A. master the audio
- B. start writing lyrics
- C. add more background harmonies
- D. create a catchy melody**
- E. design the album cover



QUESTION 7

399 POINTS



<https://www.yout-ube.com/watch?v=Rs7u2TTPXFE>



What is Netflix's "Chaos Monkey" MOST useful for?

- A. testing new user interface designs
- B. generating random variations in UI design
- C. applying Six Sigma techniques
- D. creating low-fidelity prototypes
- E. improving the resilience of their servers**



ROUND 6

feat. **GE****GUESSR**



A

igary

Vancouver



B

MONTANA

NORTH DAKOTA



C

SOUTH DAKOTA



D

United States



E

Dallas



Wish you were here

ONTARIO

QUEBEC

Winnipeg

WASHINGTON

OREGON

IDAHO

WYOMING

MINNESOTA

WISCONSIN

MICHIGAN

Montreal

VT

NH

MA

CT

RI

New York

Chicago

Toronto

NEW YORK

PENN

Washington

NEBRASKA

IOWA

ILLINOIS

OHIO

KANSAS

MISSOURI

INDIANA

WEST VIRGINIA

KENTUCKY

VIRGINIA

OKLAHOMA

MISSISSIPPI

TENNESSEE

NORTH CAROLINA

SOUTH CAROLINA

TEXAS

ARKANSAS

ALABAMA

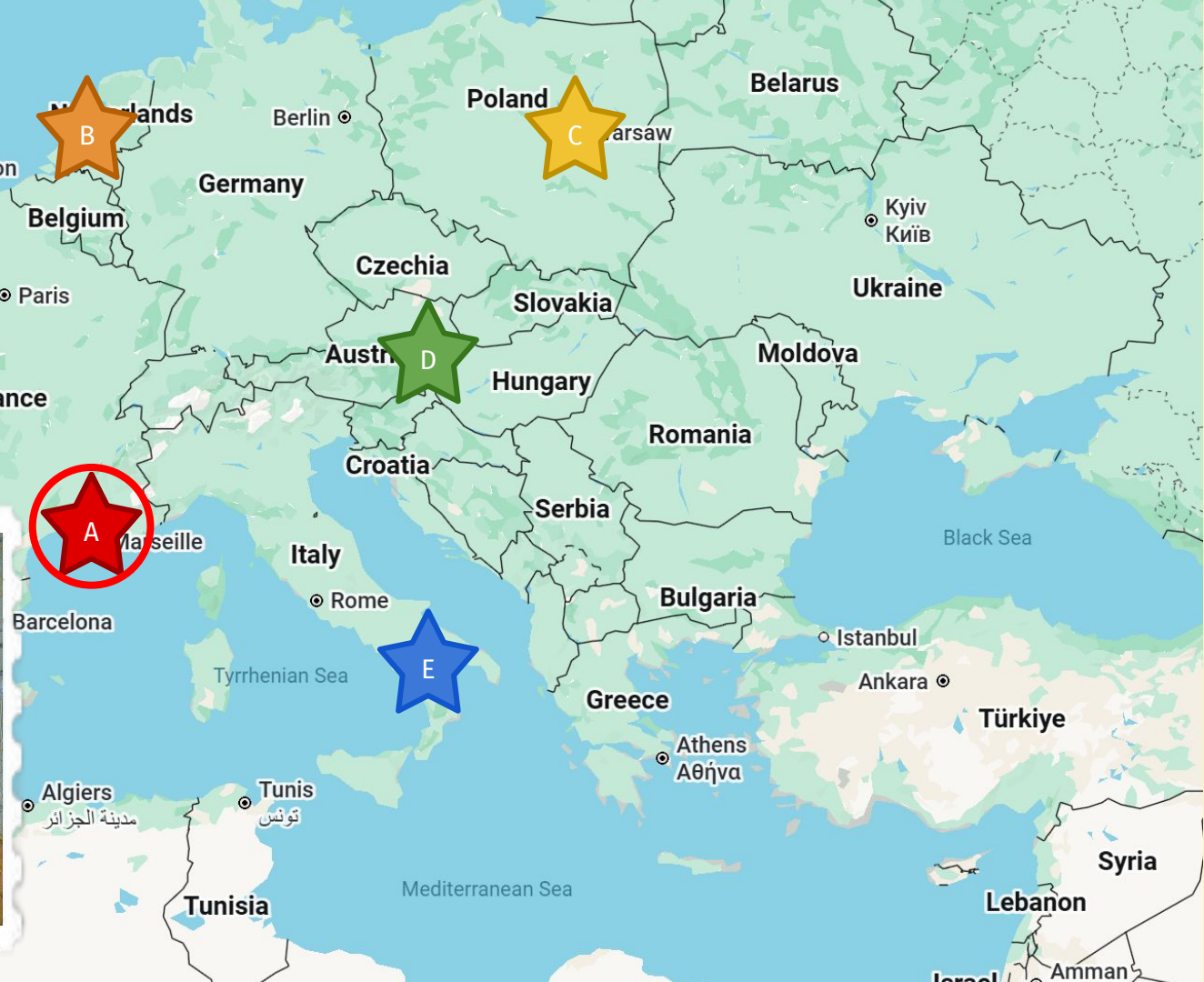
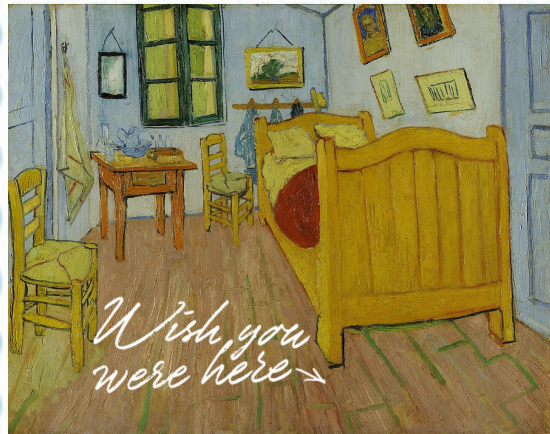
GEORGIA

Houston

LOUISIANA

Gulf







*Wish you
were here.*

30°N
60°E





ROUND 7



QUESTION 1

300 POINTS



https://www.yout-ube.com/watch?v=Smhp_wxqqWc&t=11s



How would Kevin Sherwood and James McCawley MOST likely answer the question, “Where are we going?”

- A. “We are heading towards certain doom.”
- B. **“How do we know where to go?”**
- C. “We’re going on an adventure.”
- D. “We are going to die eventually.”
- E. “Honestly, let’s not go anywhere at all.”



QUESTION 2

345 POINTS



<https://www.youtube.com/watch?v=tDUv59Yu04Y&t=2s>



Which of the following features in an app could also help make a good first impression?

- A. Wizard of Oz methods
- B. splash screen**
- C. auxiliary games
- D. throbber
- E. minimum marketable feature



QUESTION 3

365 POINTS



<https://www.youtube.com/watch?v=uaX8f4e5s9g>



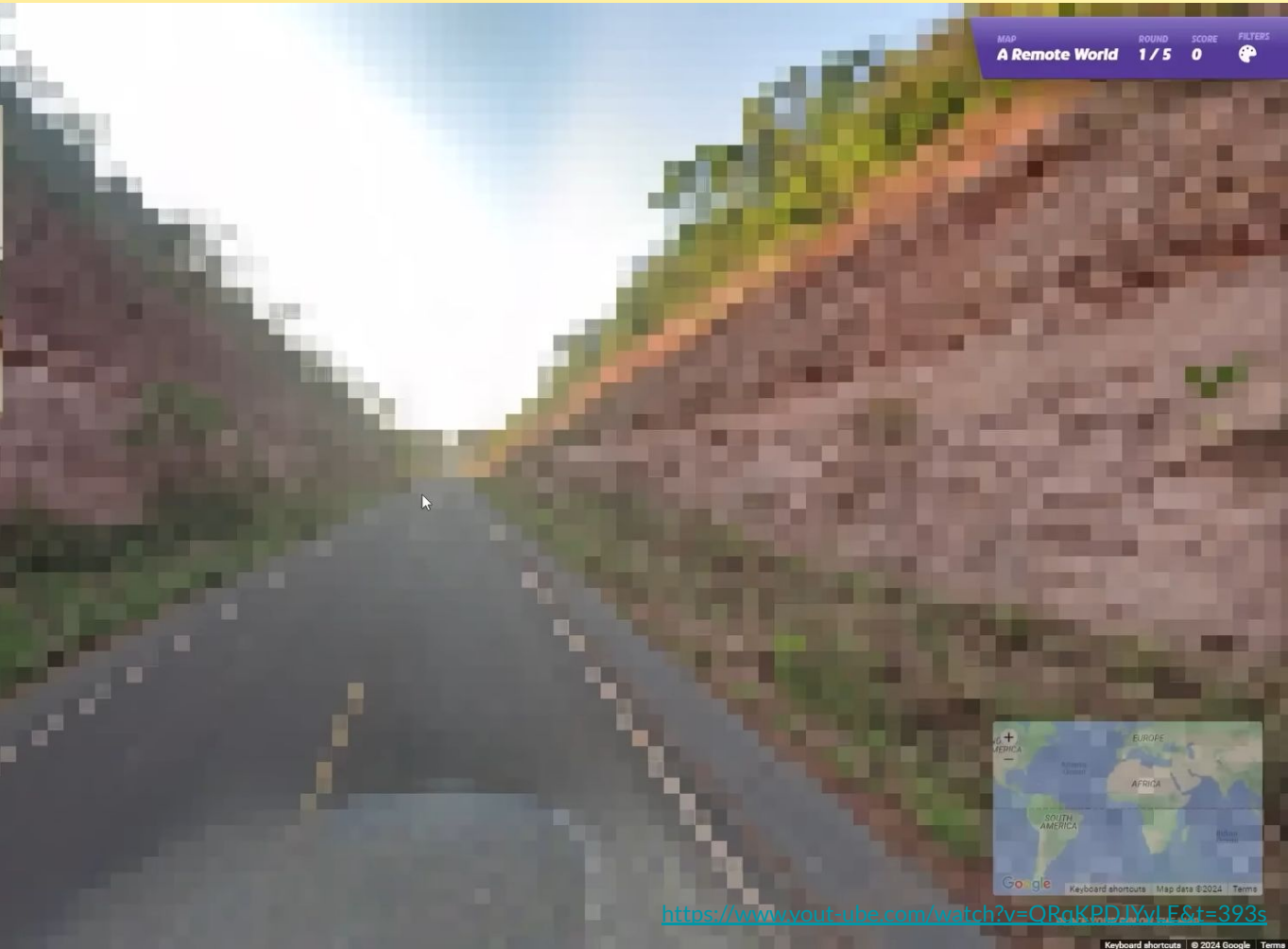
In which other case does the narrator also play an active role in the story's progression?

- A. "Where Do We Go From Here?"
- B. *Waiting for Godot*
- C. *The Backrooms*
- D. *The Terminal*
- E. ***The Stanley Parable***



QUESTION 4

400 POINTS





In which featureless expanse would Inuit wayfinding be MOST effective?

- A. a barren desert
- B. savannah plains
- C. an icy tundra**
- D. a vast ocean
- E. clear blue skies



QUESTION 5

420 POINTS

FIDE WORLD CUP 2021

00:37

Chess.com

FIDE WORLD CUP 2021

JULY 11 — AUGUST 8



#FIDEWorldCup

https://www.youtube.com/watch?v=vh_pieNaNk0

SUBSCRIBE



This appalling lack of social skills among people is MOST likely amplified by

- A. the rise of remote work
- B. the emergence of Putt's Law
- C. moving out from parents' house
- D. increased risk-taking among teens
- E. the proliferation of liminal spaces



QUESTION 6

450 POINTS



<https://www.youtube.com/watch?v=xuCn8ux2gts&t=240s>



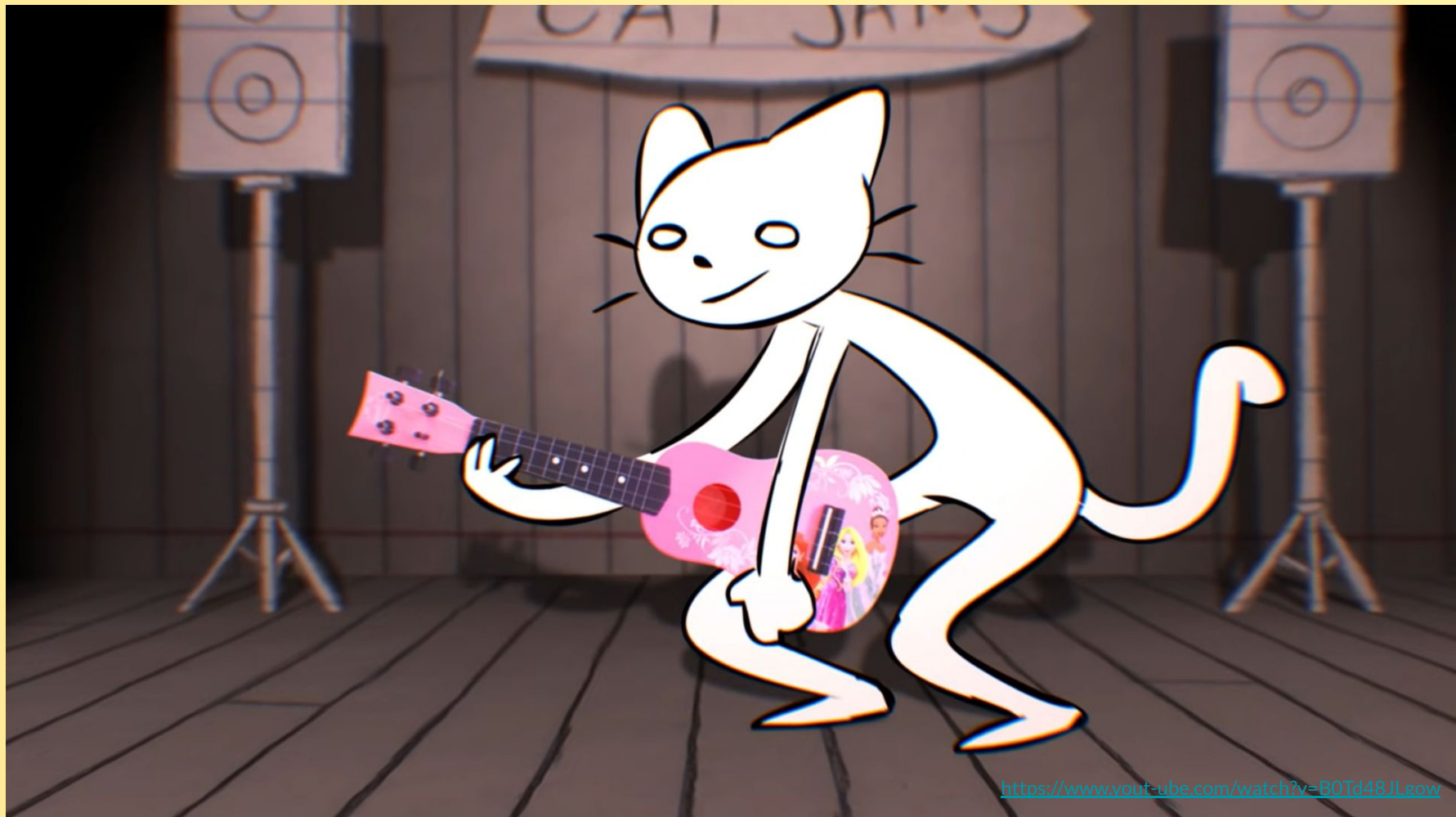
Like humans, online platforms also evolve. Which of the following platforms started out as an online dating service?

- A. YouTube
- B. Facebook
- C. LinkedIn
- D. Amazon
- E. Discord



QUESTION 7

500 POINTS



<https://www.youtube.com/watch?v=B0Tt48JLeow>



What lyric would Richard Blanco MOST likely add to this song about falling in love?

- A. "I'm far from the girl I love."
- B. "Nothing is certain when you're about."
- C. "I'll wait for the next love to come around..."
- D. **"Oh, to love a girl as if you've lost one."**
- E. "I want to be with you beneath the roses."

The last question will be
worth...

670 POINTS



https://www.yout-ube.com/watch?v=ocEzNLk_F_k



Which of the following people could you MOST expect to suffer “main character syndrome”?

- A. a political asylum-seeker
- B. a person using the Ivy Lee method
- C. a tourist on vacation**
- D. an adherent of a doomsday cult
- E. a reader of “Death Be not Proud”